

# PARTS CATALOG

## Workmaster 65/75 4 Cylinder Tractor

Print No. 84546016  
Replaces: 84274641  
8/2011



# PARTS CATALOG

## Workmaster 65/75 4 Cylinder Tractor

Print No. 84546016  
Replaces: 84274641  
8/2011



**NEW HOLLAND**

AGRICULTURE

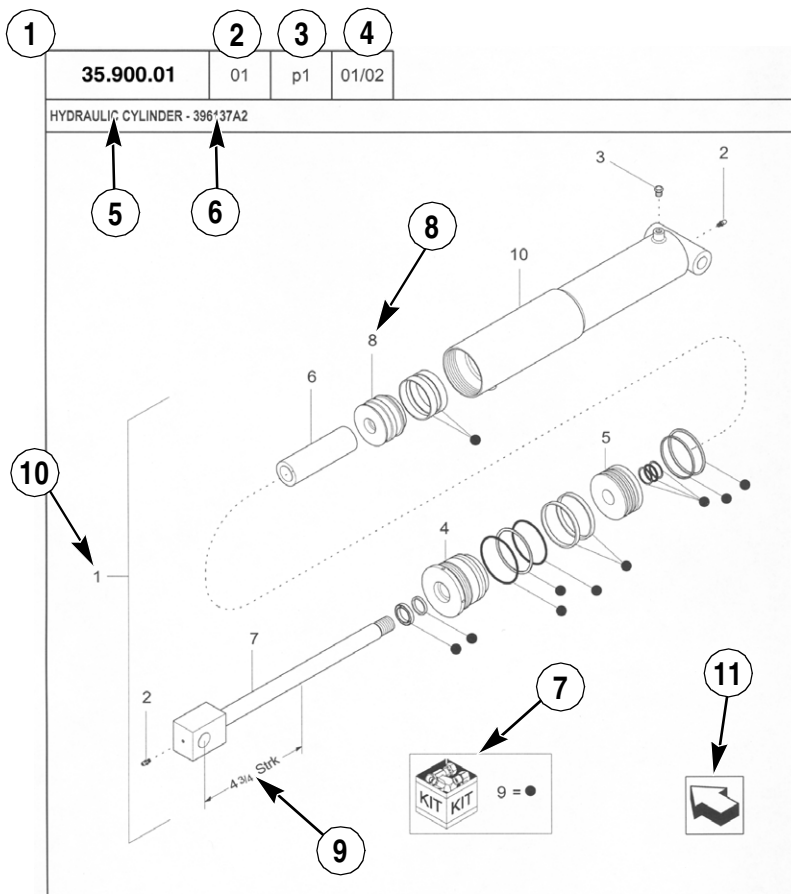


# GENERAL INFORMATION

1. Whenever the terms left and right are used, it should be understood to mean from a position facing in direction of travel.
2. Throughout this manual you may find common hardware not illustrated, but listed in the description column. The service part immediately preceding a hardware listing is the part using these particular items for mounting purposes. This hardware is not included with the service part or assembly when ordered as a replacement.
3. The illustrations show typical assemblies plus individual parts but in all cases may not show the exact shape or detail of parts required. However, the purpose for the illustrations is to identify parts performing like functions. Whenever possible illustrations are located at the beginning of each section or immediately adjacent to the applicable text.
4. CNH America LLC is continually striving to improve its products. We must, therefore, reserve the right to make improvements or changes when it becomes practical and possible to do so, without incurring any obligation to make changes or additions to the equipment sold previously.

**CNH America LLC, Racine, WI 53404 U.S.A.**

# How to Use Your Parts Catalog



HYDRAULIC CYLINDER - 396137A2					
REF	FN	PART NUMBER	YR/SN	QTY	DESCRIPTION
1	1	396137A2	BTW 01/85 & 02/02	1	CYLINDER ASSY. 4-3/4 in strk, Inc 2-10
2		31-95	Before 01/85	2	FITTING
2		219-8	From 01/85	2	NIPPLE, LUBE Grease, 1/4 tpr x 17/32
3		{402475A2}		1	BREATHER
4		402474A1		1	CAP CYLINDER END
5		402468A1	BSN JJC0189200	1	PISTON ROD/GLAND
5		145221C3	ASN JJC0189200	1	PISTON
6		402471A1		1	SPACER
7		402473A1		1	ROD, PISTON
8		402469A1		1	PISTON ROD/GLAND
9		402476A1		1	PACKAGE, SEALS
10		NSS		1	NOT SERVICED SEPARAT CASE ASSEMBLY
(1) 08-20					
STANDARD			MODELS		

---

# How to Use Your Parts Catalog

---

1. Figure Number
2. Sequence code within the Figure Number
3. Page number within the Sequence Code
4. Date of Printing (month / year)
5. Figure Description
6. General information regarding the figure
7. Parts supplied in repair kits per symbol reference
8. Figure call-out of the part number (REF)
9. Technical Specifications relating to the part indicated
10. Figure call-out includes bracketed items, the included items may also be listed in the additional description area
11. Orientation - Arrow indicates front of the machine
12. Footnote - Additional information relating to the part number. In this example, 08-20 equals another figure that this part is shown on.
13. Part Number
  - NSS = Non-serviced parts
  - Bracketed numbers = not available as service parts in this market
14. Not Available as service part in this market
15. YR/SN
  - Year
    - Before 01/85 = Part valid for production January 1985 and before
    - From 01/85 = Part valid for production from January 1985 and after
    - BTW 01/85 & 02/02 = Part valid for machines produced between January 1985 and February 2002.
  - Serial Number (P.I.N.)
    - BSN JJC0268800 = Part valid for serial number JJC0268800 and below
    - ASN JJC0268800 = Part valid for serial number JJC0268800 and above
    - BTW JJC0178000 & JJC0179000 = Part valid for serial numbers between JJC0178000 & JJC0179000
16. Total Quantity of the Part referred to in the page. The quantity can be replaced by the following indications:
  - AR = quantity as required
  - X = as required
17. Part Description
18. Additional description of the part to help confirm identification
19. Figure Notes
20. Model Number(s)

# Explanation of Abbreviations

Abbreviation	Meaning
adj	adjustable
amp	ampere
AR	As required
ASN	Serial number and after / P.I.N. and after
barb	barb
blkhd	bulkhead
boss	boss
BSN	before serial number / before P.I.N
BTW	between
cc	cubic centimetre
chain	chain
cl	class
cp pt	cup point
CRS	Chrome Alloy Steel
CST	Carbon Steel
cu yd	cubic yard
deg	degree
dia	diameter
dr type	drive type
dry	dry
fc	face
fc sl	face seal
fem	female
fem PT	female pipe thread
fl	flare
ft	feet (or foot)
gal	gallon(s)
gr	grade
hd	head
hp	horsepower
ID	inside diameter

Abbreviation	Meaning
in	inch(es)
Inc.	includes
inv fl	inverted flare
K	kilo
kg	kilogram
L	litre
lb	pound(s)
lg	long
LH	left hand
LH thd	left hand thread
links	links
M	(prefix) metric thread size
m	metre
male	male
mm	millimetre
NF	National Fine
No.	number
NS	National Super Fine
OD	outside diameter
ohm	electrical unit of resistance
Or	O-ring
orifice	orifice
P	pitch
piece	piece
psi	pounds per square inch
PT	pipe thread
rd	round
rd holes	round holes
RH	right hand
RH thd	right hand thread
rpm	revolutions per minute

---

# Explanation of Abbreviations

---

Abbreviation	Meaning
sl	self locking
slat	slat
spool	spool
sq	square
SST	Stainless Steel
st	self tapping
stem	stem
strk	stroke
sw	swivel
T	teeth
Teflon	Teflon
thin	thin
thk	thick
tpr	taper

Abbreviation	Meaning
tube	tube
type	type
V	volt(s)
W	watt(s)
way	way
wide	wide
X	as required
yd	yard

## Dimensions

Metric and U.S. hardware dimensions do not show the numeric designations of standard coarse threads. A number following a semi colon (;) is the class or grade of hardware. A comma (,) represents the decimal point (.) used in U.S. dimensions.





---

## TABLE OF CONTENTS

---

00.100.01		INITIAL STOCKING LIST (ISL)
05.100.01		FILTERS & CAPACITIES
10.001.01	01	ENGINE
10.001.01	02	ENGINE
10.001.02	01	CYLINDER BLOCK
10.001.02	02	CYLINDER BLOCK
10.012.03	01	LIFT HOOKS - ENGINE
10.012.03	02	LIFT HOOKS - ENGINE
10.101.01	01	CYLINDER HEAD - VALVES
10.101.01	02	CYLINDER HEAD - VALVES
10.101.02	01	CYLINDER HEAD COVER - ROCKER SHAFT
10.101.02	02	CYLINDER HEAD COVER - ROCKER SHAFT
10.102.01	01	TIMING GEAR CASE
10.102.01	02	TIMING GEAR CASE
10.102.02	01	GEAR - PTO
10.102.02	02	GEAR - PTO
10.102.03	01	OIL SUMP
10.102.03	02	OIL SUMP
10.103.01	01	PULLEY - CRANKSHAFT
10.103.01	02	PULLEY - CRANKSHAFT
10.103.02	01	CRANKSHAFT
10.103.02	02	CRANKSHAFT
10.103.03	01	CYLINDER HEAD - COVERS
10.103.03	02	CYLINDER HEAD - COVERS
10.103.04	01	FLYWHEEL HOUSING
10.103.04	02	FLYWHEEL HOUSING
10.103.04	03	FLYWHEEL
10.105.02	01	PISTON
10.105.02	02	PISTON
10.105.03	01	CONNECTING ROD
10.105.03	02	CONNECTING ROD
10.106.01	01	CAMSHAFT - PUSH RODS
10.106.01	02	CAMSHAFT - PUSH RODS
10.110.02	01	BALANCER
10.110.02	02	BALANCER
10.124.01		FUEL LINES
10.202.01		AIR CLEANER
10.202.02		AIR CLEANER HOSES
10.206.01	01	FUEL FILTER
10.206.01	02	FUEL FILTER
10.210.01	01	FUEL PUMP
10.210.01	02	FUEL PUMP
10.210.02	01	FUEL PUMP - FUEL LINES
10.210.02	02	FUEL PUMP - FUEL LINES
10.216.01		FUEL TANK
10.218.01	01	INJECTORS
10.218.01	02	INJECTORS
10.218.02	01	FUEL INJECTOR - LEAK-OFF LINE
10.218.02	02	FUEL INJECTOR - LEAK-OFF LINE
10.218.03	01	FUEL LINES
10.218.03	02	FUEL LINES

---

## TABLE OF CONTENTS

---

10.218.04	01	FUEL INJECTOR - RETURN LINES
10.218.04	02	FUEL INJECTOR - RETURN LINES
10.220.01		THROTTLE CONTROL AND LINKAGE
10.246.01	01	INJECTION PUMP
10.246.01	02	INJECTION PUMP
10.246.01	03	COVER - INJECTION PUMP DRIVE
10.246.01	04	COVER - INJECTION PUMP DRIVE
10.250.01	01	TURBOCHARGER
10.250.01	02	TURBOCHARGER
10.254.01	01	INTAKE MANIFOLD
10.254.01	02	INTAKE MANIFOLD
10.254.01	03	SPACER - INTAKE MANIFOLD W/O PREHEATER
10.254.02	01	EXHAUST SYSTEM W/MUFFLER
10.254.03	01	EXHAUST MANIFOLD
10.254.03	02	EXHAUST MANIFOLD
10.254.04		MUFFLER
10.254.05		ENGINE - BLOCK HEATER
10.254.06		AIR HEATER ENGINE STARTING AID
10.304.01	01	PUMP - ENGINE OIL
10.304.01	02	PUMP - ENGINE OIL
10.304.01	03	OIL PUMP - SUCTION TUBE
10.304.01	04	OIL PUMP - SUCTION TUBE
10.304.02	01	ENGINE OIL DIPSTICK
10.304.02	02	ENGINE OIL DIPSTICK
10.304.03	01	ENGINE OIL FILTER
10.304.03	02	ENGINE OIL FILTER
10.400.01		RADIATOR HOSES
10.402.01	01	THERMOSTAT
10.402.01	02	THERMOSTAT
10.402.02	01	WATER PUMP
10.402.02	02	WATER PUMP
10.406.01		RADIATOR ASSEMBLY
10.408.02	01	HEAT EXCHANGER
10.408.02	02	HEAT EXCHANGER
10.408.02	03	HEAT EXCHANGER COOLANT TUBE
10.408.02	04	HEAT EXCHANGER COOLANT TUBE
10.414.02		FAN DRIVE
10.414.03		BELT TENSIONER - FAN
10.414.04		FAN DRIVE - SUPPORT
18.100.01	01	CLUTCH ASSEMBLY
18.100.01	02	CLUTCH PEDAL AND LINKAGE
21.112.01		8X8 SHUTTLE - HOUSING
21.114.01		TRANSMISSION HOUSING
21.130.02		GEARSHIFT
21.130.03		GEAR SPLITTER CONTROL
21.140.01		GEARSHIFT FORKS
21.140.02	01	TRANSMISSION GEARS AND SHAFTS
21.140.02	02	TRANSMISSION GEARS AND SHAFTS (PARTIAL SYNCHROMESH)
21.140.03		HIGH - LOW RANGE GEARS
23.101.01		FRONT AXLE DRIVESHAFT - 4WD
23.101.02		FRONT AXLE DRIVESHAFT - SHIELD - 4WD

---

# TABLE OF CONTENTS

---

23.101.03		FRONT AXLE DROPBOX - 4WD
23.101.04		DROPBOX - GEARS - 4WD
23.101.05		CONTROL LEVER - 4WD
25.100.01		AXLE HOUSING - 4WD
25.100.02		FRONT AXLE SUPPORT - 4WD
25.102.01		FRONT AXLE - DIFFERENTIAL CARRIER - 4WD
25.102.02		FRONT AXLE - RING GEAR AND PINION - 4WD
25.102.03		FRONT AXLE - DIFFERENTIAL - 4WD
25.108.01		FRONT AXLE - AXLE SHAFT - 4WD
25.108.02		WHEEL HUB & STEERING KNUCKLE - 4WD
25.108.03		FRONT AXLE - FINAL DRIVE GEARS - 4WD
27.100.01		AXLE HOUSING - REAR
27.106.01		DIFFERENTIAL PINION SHAFT & GEARS
27.106.02		DIFFERENTIAL
27.110.01		DIFFERENTIAL LOCK PEDAL
27.110.02	01	DIFFERENTIAL LOCK SHIFT FORK
27.110.02	02	DIFFERENTIAL LOCK BRAKES
27.126.04		FINAL DRIVE
27.126.05		REAR AXLE - FINAL DRIVE SHAFT
31.101.01		PTO CONTROL LEVER
31.110.01		PTO CLUTCH LINKAGE
31.110.02		PTO - SHAFTS AND GEARS
31.110.03		PTO CLUTCH SHAFT
33.110.01		PARKING BRAKE CONTROL
33.120.01		BRAKE DISCS
33.120.02		BRAKE PEDALS AND LINKAGE
35.100.01	01	HYDRAULIC LIFT CIRCUIT - FRONT
35.100.01	02	HYDRAULIC LIFT CIRCUIT - REAR
35.108.01		HITCH CONTROL LEVER
35.110.01		LIFT HOUSING
35.110.02		LIFT HOUSING - CYLINDER AND PISTON
35.110.04		LIFT HOUSING - LIFT ARMS
35.110.05		POSITION CONTROL LINKAGE
35.112.01		LOAD SENSING LINKAGE
35.114.01	01	LIFT CONTROL VALVE - FLOW CONTROL
35.114.01	02	LIFT CONTROL VALVE - PRESSURE RELIEF
35.120.02		TOP LINK
35.120.03		LIFT LINKS AND LOWER LINKS
35.120.04		HITCH SWAY LIMITER
35.204.01		REMOTE VALVE - SINGLE ACTING
37.100.01		SWINGING DRAWBAR
37.100.02		HITCH DRAWBAR KIT
37.140.01	01	WHEEL WEIGHT - REAR - SET OF 4
37.140.01	02	WHEEL WEIGHT - REAR - SET OF 6
37.140.02		BALLAST BOX
37.140.04		REAR BALLAST WEIGHTS - 4 BOLT WHEEL
37.140.07		FRONT WEIGHTS CARRIER - 60 KG
37.140.08		6 FRONT WEIGHT PACK - 40 KG
41.106.01		STEERING TIE-ROD - STEERING ARMS - 2WD
41.106.02		SPINDLE - HUB - 2WD
41.106.03		STEERING TIE-ROD - 4WD

---

# TABLE OF CONTENTS

---

41.200.01	01	STEERING CYLINDER HOSES - 2WD
41.200.01	02	STEERING CYLINDER HOSES - 4WD
41.200.02		STEERING RESERVOIR TO PUMP CIRCUIT
41.200.03		POWER STEERING RESERVOIR
41.204.01		STEERING COLUMN
41.206.01		POWER STEERING PUMP
41.206.02		TANDEM HYDRAULIC/STEERING PUMP
41.216.01		STEERING CYLINDER - 2WD
41.216.02		STEERING CYLINDER - 4WD
44.101.01		FRONT AXLE SUPPORT
44.101.02		FRONT AXLE - 2WD
44.511.01		FRONT WHEELS - 2WD
44.511.02		FRONT WHEELS - 4WD
44.511.03		REAR WHEELS
55.100.01		WIRING HARNESS
55.201.01	01	STARTER MOTOR
55.201.01	02	STARTER MOTOR
55.201.02		STARTER MOTOR-COMPONENTS
55.205.01		THERMOSTART
55.301.01	01	ALTERNATOR
55.301.01	02	ALTERNATOR
55.301.02		BATTERY - BATTERY CABLES
55.404.01		HEADLAMPS
55.404.02		WORK LIGHT
55.408.01		HORN KIT
55.414.01	01	ENGINE SENSOR UNITS
55.414.01	02	ENGINE SENSOR UNITS
55.418.01	01	DASHBOARD - ELECTRICAL COMPONENTS
55.418.01	02	INSTRUMENT CLUSTER
55.560.01	01	HARNESS - FUEL SHUT-OFF
55.560.01	02	HARNESS - FUEL SHUT-OFF
88.100.01		DIA KIT, 2ND REAR REMOTE VALVE COMPLETING - 719935026 - USED BELOW PIN # 1136916
88.100.01	01	FLOAT & DETENT VALVE - 5152878
88.100.01	02	FLOAT & DETENT VALVE - 5152878
88.100.01	03	SELF CENTERING VALVE - 87609761
88.100.02		DIA KIT, 2ND REMOTE VALVE - 719279022 - ON & ABOVE PIN # 1136916
88.100.03		TOOL BOX
90.100.02		CONSOLE - STEERING
90.100.03		ENGINE HOOD
90.108.01	01	DECALS - MODEL IDENTIFICATION
90.108.01	02	DECALS - MODEL IDENTIFICATION
90.108.02		DECALS - OPERATING INSTRUCTIONS
90.108.03		SLOW VEHICLE SYMBOL
90.114.01		ROPS
90.114.02		FOPS CANOPY - 718857096
90.114.03		ROPS - FOLDABLE
90.115.01		ARMREST AND COVER
90.116.01		REAR FENDERS
90.118.01		FOOTBOARDS AND STEP
90.120.01		SEAT BRACKET

---

# TABLE OF CONTENTS

---

90.120.02

SEAT

<b>ALPHABETICAL INDEX</b>	<b>FIGURE</b>	<b>SEQ.</b>
6 FRONT WEIGHT PACK - 40 KG	37.140.08	
8X8 SHUTTLE - HOUSING	21.112.01	
AIR CLEANER	10.202.01	
AIR CLEANER HOSES	10.202.02	
AIR HEATER ENGINE STARTING AID	10.254.06	
ALTERNATOR	55.301.01	02
ALTERNATOR	55.301.01	01
ARMREST AND COVER	90.115.01	
AXLE HOUSING - 4WD	25.100.01	
AXLE HOUSING - REAR	27.100.01	
BALANCER	10.110.02	01
BALANCER	10.110.02	02
BALLAST BOX	37.140.02	
BATTERY - BATTERY CABLES	55.301.02	
BELT TENSIONER - FAN	10.414.03	
BRAKE DISCS	33.120.01	
BRAKE PEDALS AND LINKAGE	33.120.02	
CAMSHAFT - PUSH RODS	10.106.01	01
CAMSHAFT - PUSH RODS	10.106.01	02
CLUTCH ASSEMBLY	18.100.01	01
CLUTCH PEDAL AND LINKAGE	18.100.01	02
CONNECTING ROD	10.105.03	02
CONNECTING ROD	10.105.03	01
CONSOLE - STEERING	90.100.02	
CONTROL LEVER - 4WD	23.101.05	
COVER - INJECTION PUMP DRIVE	10.246.01	03
COVER - INJECTION PUMP DRIVE	10.246.01	04
CRANKSHAFT	10.103.02	02
CRANKSHAFT	10.103.02	01
CYLINDER BLOCK	10.001.02	01
CYLINDER BLOCK	10.001.02	02
CYLINDER HEAD - COVERS	10.103.03	02
CYLINDER HEAD - COVERS	10.103.03	01
CYLINDER HEAD - VALVES	10.101.01	02
CYLINDER HEAD - VALVES	10.101.01	01
CYLINDER HEAD COVER - ROCKER SHAFT	10.101.02	02
CYLINDER HEAD COVER - ROCKER SHAFT	10.101.02	01
DASHBOARD - ELECTRICAL COMPONENTS	55.418.01	01
DECALS - MODEL IDENTIFICATION	90.108.01	01
DECALS - MODEL IDENTIFICATION	90.108.01	02
DECALS - OPERATING INSTRUCTIONS	90.108.02	
DIFFERENTIAL	27.106.02	
DIFFERENTIAL LOCK BRAKES	27.110.02	02
DIFFERENTIAL LOCK PEDAL	27.110.01	
DIFFERENTIAL LOCK SHIFT FORK	27.110.02	01
DIFFERENTIAL PINION SHAFT & GEARS	27.106.01	
DROPBOX - GEARS - 4WD	23.101.04	
ENGINE	10.001.01	02
ENGINE	10.001.01	01
ENGINE - BLOCK HEATER	10.254.05	
ENGINE HOOD	90.100.03	
ENGINE OIL DIPSTICK	10.304.02	01
ENGINE OIL DIPSTICK	10.304.02	02
ENGINE OIL FILTER	10.304.03	01
ENGINE OIL FILTER	10.304.03	02
ENGINE SENSOR UNITS	55.414.01	01

ENGINE SENSOR UNITS	55.414.01	02
EXHAUST MANIFOLD	10.254.03	01
EXHAUST MANIFOLD	10.254.03	02
EXHAUST SYSTEM W/MUFFLER	10.254.02	01
FAN DRIVE	10.414.02	
FAN DRIVE - SUPPORT	10.414.04	
FINAL DRIVE	27.126.04	
FLYWHEEL	10.103.04	03
FLYWHEEL HOUSING	10.103.04	01
FLYWHEEL HOUSING	10.103.04	02
FOOTBOARDS AND STEP	90.118.01	
FOPS CANOPY - 718857096	90.114.02	
FRONT AXLE - 2WD	44.101.02	
FRONT AXLE - AXLE SHAFT - 4WD	25.108.01	
FRONT AXLE - DIFFERENTIAL - 4WD	25.102.03	
FRONT AXLE - DIFFERENTIAL CARRIER - 4WD	25.102.01	
FRONT AXLE - FINAL DRIVE GEARS - 4WD	25.108.03	
FRONT AXLE - RING GEAR AND PINION - 4WD	25.102.02	
FRONT AXLE DRIVESHAFT - 4WD	23.101.01	
FRONT AXLE DRIVESHAFT - SHIELD - 4WD	23.101.02	
FRONT AXLE DROPBOX - 4WD	23.101.03	
FRONT AXLE SUPPORT	44.101.01	
FRONT AXLE SUPPORT - 4WD	25.100.02	
FRONT WEIGHTS CARRIER - 60 KG	37.140.07	
FRONT WHEELS - 2WD	44.511.01	
FRONT WHEELS - 4WD	44.511.02	
FUEL FILTER	10.206.01	02
FUEL FILTER	10.206.01	01
FUEL INJECTOR - LEAK-OFF LINE	10.218.02	02
FUEL INJECTOR - LEAK-OFF LINE	10.218.02	01
FUEL INJECTOR - RETURN LINES	10.218.04	02
FUEL INJECTOR - RETURN LINES	10.218.04	01
FUEL LINES	10.124.01	
FUEL LINES	10.218.03	01
FUEL LINES	10.218.03	02
FUEL PUMP	10.210.01	02
FUEL PUMP	10.210.01	01
FUEL PUMP - FUEL LINES	10.210.02	01
FUEL PUMP - FUEL LINES	10.210.02	02
FUEL TANK	10.216.01	
GEAR - PTO	10.102.02	02
GEAR - PTO	10.102.02	01
GEAR SPLITTER CONTROL	21.130.03	
GEARSHIFT	21.130.02	
GEARSHIFT FORKS	21.140.01	
HARNESS - FUEL SHUT-OFF	55.560.01	01
HARNESS - FUEL SHUT-OFF	55.560.01	02
HEADLAMPS	55.404.01	
HEAT EXCHANGER	10.408.02	02
HEAT EXCHANGER	10.408.02	01
HEAT EXCHANGER COOLANT TUBE	10.408.02	04
HEAT EXCHANGER COOLANT TUBE	10.408.02	03
HIGH - LOW RANGE GEARS	21.140.03	
HITCH CONTROL LEVER	35.108.01	
HITCH DRAWBAR KIT	37.100.02	
HITCH SWAY LIMITER	35.120.04	
HORN KIT	55.408.01	
HYDRAULIC LIFT CIRCUIT - FRONT	35.100.01	01



HYDRAULIC LIFT CIRCUIT - REAR	35.100.01	02
INJECTION PUMP	10.246.01	01
INJECTION PUMP	10.246.01	02
INJECTORS	10.218.01	02
INJECTORS	10.218.01	01
INSTRUMENT CLUSTER	55.418.01	02
INTAKE MANIFOLD	10.254.01	01
INTAKE MANIFOLD	10.254.01	02
LIFT CONTROL VALVE - FLOW CONTROL	35.114.01	01
LIFT CONTROL VALVE - PRESSURE RELIEF	35.114.01	02
LIFT HOOKS - ENGINE	10.012.03	02
LIFT HOOKS - ENGINE	10.012.03	01
LIFT HOUSING	35.110.01	
LIFT HOUSING - CYLINDER AND PISTON	35.110.02	
LIFT HOUSING - LIFT ARMS	35.110.04	
LIFT LINKS AND LOWER LINKS	35.120.03	
LOAD SENSING LINKAGE	35.112.01	
MUFFLER	10.254.04	
OIL PUMP - SUCTION TUBE	10.304.01	03
OIL PUMP - SUCTION TUBE	10.304.01	04
OIL SUMP	10.102.03	02
OIL SUMP	10.102.03	01
PARKING BRAKE CONTROL	33.110.01	
PISTON	10.105.02	02
PISTON	10.105.02	01
POSITION CONTROL LINKAGE	35.110.05	
POWER STEERING PUMP	41.206.01	
POWER STEERING RESERVOIR	41.200.03	
PTO - SHAFTS AND GEARS	31.110.02	
PTO CLUTCH LINKAGE	31.110.01	
PTO CLUTCH SHAFT	31.110.03	
PTO CONTROL LEVER	31.101.01	
PULLEY - CRANKSHAFT	10.103.01	01
PULLEY - CRANKSHAFT	10.103.01	02
PUMP - ENGINE OIL	10.304.01	02
PUMP - ENGINE OIL	10.304.01	01
RADIATOR ASSEMBLY	10.406.01	
RADIATOR HOSES	10.400.01	
REAR AXLE - FINAL DRIVE SHAFT	27.126.05	
REAR BALLAST WEIGHTS - 4 BOLT WHEEL	37.140.04	
REAR FENDERS	90.116.01	
REAR WHEELS	44.511.03	
REMOTE VALVE - SINGLE ACTING	35.204.01	
ROPS	90.114.01	
ROPS - FOLDABLE	90.114.03	
SEAT	90.120.02	
SEAT BRACKET	90.120.01	
SLOW VEHICLE SYMBOL	90.108.03	
SPACER - INTAKE MANIFOLD W/O PREHEATER	10.254.01	03
SPINDLE - HUB - 2WD	41.106.02	
STARTER MOTOR	55.201.01	02
STARTER MOTOR	55.201.01	01
STARTER MOTOR-COMPONENTS	55.201.02	
STEERING COLUMN	41.204.01	
STEERING CYLINDER - 2WD	41.216.01	
STEERING CYLINDER - 4WD	41.216.02	
STEERING CYLINDER HOSES - 2WD	41.200.01	01
STEERING CYLINDER HOSES - 4WD	41.200.01	02

STEERING RESERVOIR TO PUMP CIRCUIT	41.200.02	
STEERING TIE-ROD - 4WD	41.106.03	
STEERING TIE-ROD - STEERING ARMS - 2WD	41.106.01	
SWINGING DRAWBAR	37.100.01	
TANDEM HYDRAULIC/STEERING PUMP	41.206.02	
THERMOSTART	55.205.01	
THERMOSTAT	10.402.01	02
THERMOSTAT	10.402.01	01
THROTTLE CONTROL AND LINKAGE	10.220.01	
TIMING GEAR CASE	10.102.01	02
TIMING GEAR CASE	10.102.01	01
TOOL BOX	88.100.03	
TOP LINK	35.120.02	
TRANSMISSION GEARS AND SHAFTS	21.140.02	01
TRANSMISSION GEARS AND SHAFTS (PARTIAL SYNCHROMESH)	21.140.02	02
TRANSMISSION HOUSING	21.114.01	
TURBOCHARGER	10.250.01	01
TURBOCHARGER	10.250.01	02
WATER PUMP	10.402.02	01
WATER PUMP	10.402.02	02
WHEEL HUB & STEERING KNUCKLE - 4WD	25.108.02	
WHEEL WEIGHT - REAR - SET OF 4	37.140.01	01
WHEEL WEIGHT - REAR - SET OF 6	37.140.01	02
WIRING HARNESS	55.100.01	
WORK LIGHT	55.404.02	





**Thanks very much for your reading,  
Want to get more information,  
Please click here, Then get the complete  
manual**

**JustClickHere** 

**NOTE:**

**If there is no response to click on the link above,  
please download the PDF document first, and then  
click on it.**

**Have any questions please write to me:  
[admin@servicemanualperfect.com](mailto:admin@servicemanualperfect.com)**